

SDG impact assessment

29 november 2022

Werkconferentie Klimaatcommitment
DNB

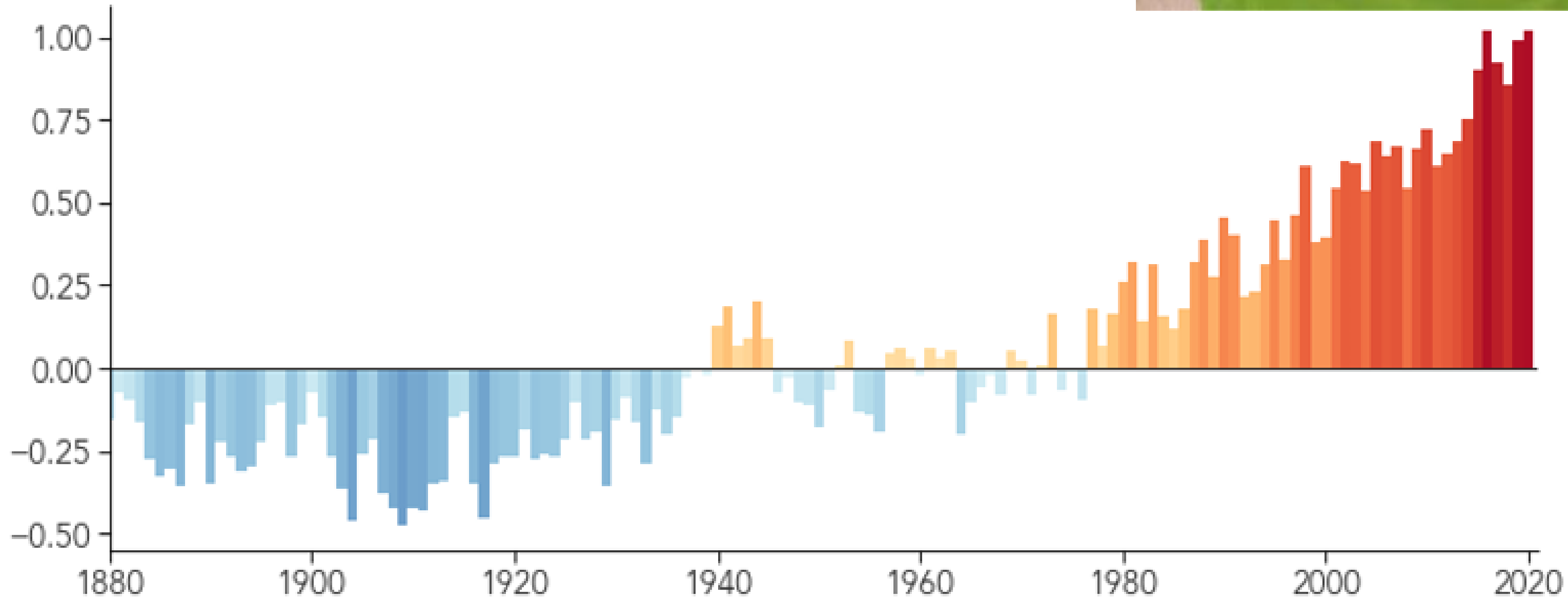


Workshop SDG Impact Assessment

1. Waarom impact assessment?
2. Working group producten:
 - SDG impact indicators (2018)
 - Overviews van methodologieën, data en voorbeelden per SDG (2021)
3. Evaluatie en vervolg

Waarom meten?

2020 in Statistical Tie for Warmest Year on Record
Global Temperature Anomaly (°C compared to the 1951-1980 average)



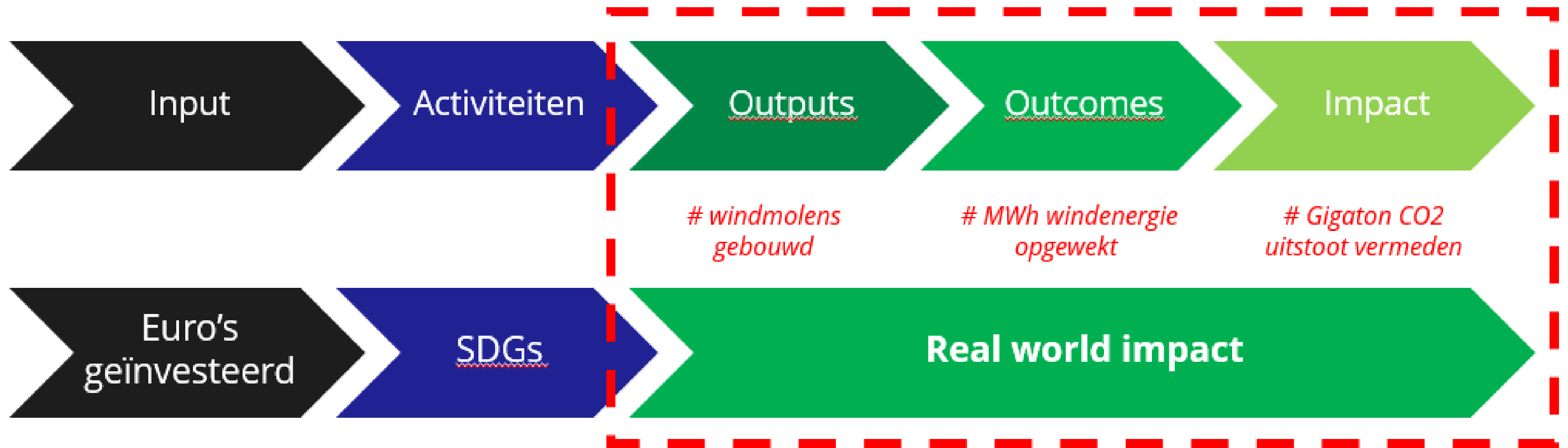
Oorspronkelijke doelstelling

The aim of the SDG Impact Measurement working group is to develop a methodology to measure the positive impact on the United Nations' Sustainable Development Goals (SDGs) investors, banks, insurance companies have through their investments.

Such a methodology must be transparent, credible and feasible, using a limited number of positive impact indicators and metrics that allow (1) comparison and addition of impact, (2) harmonisation of requests for data distributed to companies and (3) consolidation of communications towards stakeholders.

The ultimate objective is to scale up sources of investment/ funding that deliver a measurable contribution to the SDGs (from millions to billions).

Logical model



Indicatoren voor positieve impact (2018)



SDG impact indicators

A guide for investors and companies

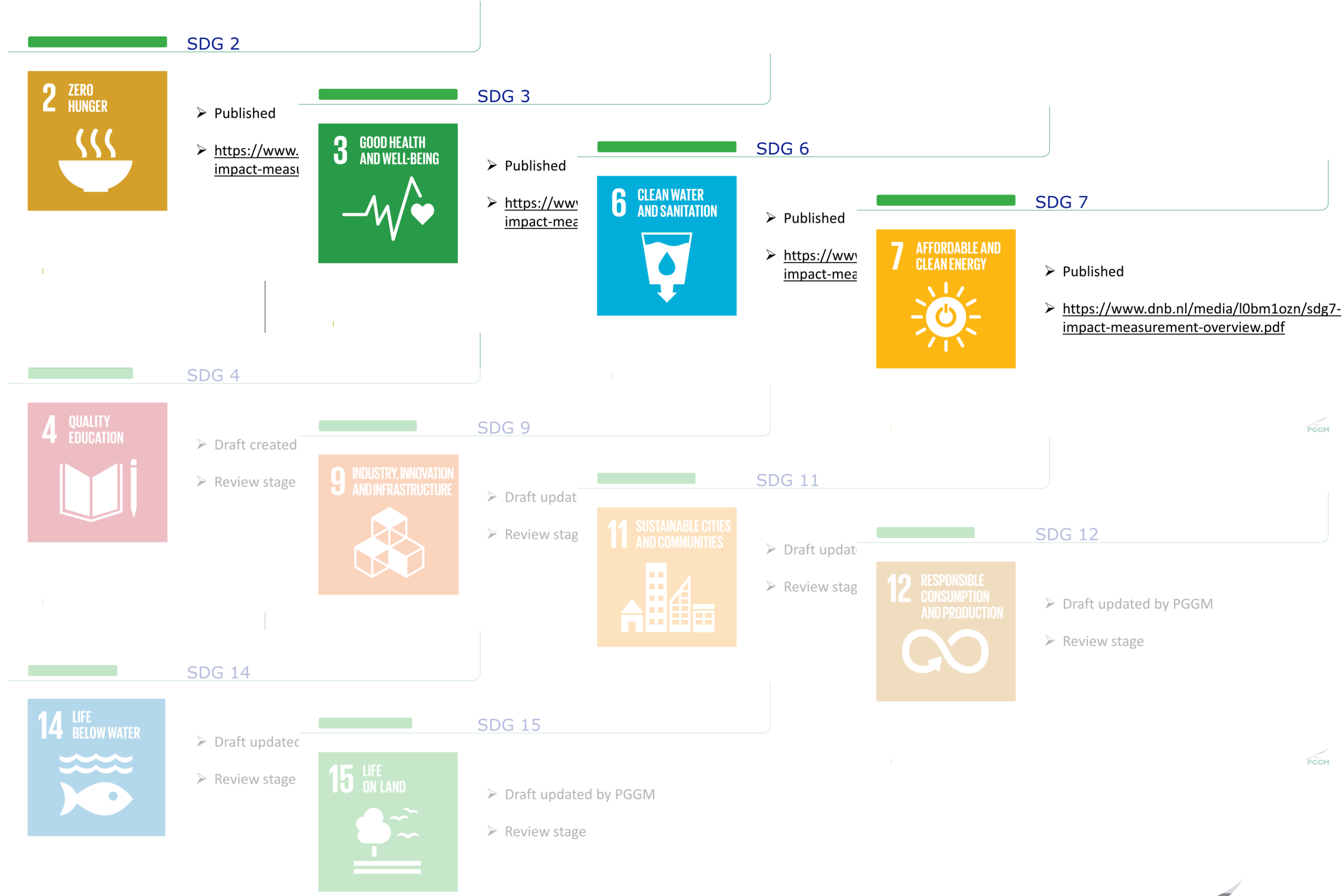
SDG	Indicator	Product (or service) Impact indicator (PI) or Operational Impact indicator (OI, in italics)	Breakdown to gender (G), vulnerability (V), income group (I) or location (L), according to UN (☑) or Working Group (✓)				Unit of measurement for aggregation
			G	V	I	L	
1 NO POVERTY	1.1	% of revenue from products serving low income groups			✓		€
	1.2	Number of people provided with access to financial services, incl. microfinance	☑ ¹⁸	☑	☑	☑	# people
2 ZERO HUNGER	2.1	Number of people provided with safe, nutritious and sufficient food					# people
	2.2	Ecologically sustainable agricultural production per hectare		☑			tonnes
	2.3	% avoided harvest, transport, storage losses					tonnes
	2.4	% products with certified improvements in nutritional value					€ (from % revenues)
3 GOOD HEALTH AND WELL-BEING	3.1	Number of people reached with improved health care	☑ ¹⁹		☑		# people
	3.2	Cost reduction for standard treatments and medicines					€
4 QUALITY EDUCATION	4.1	Number of people receiving education services (split pre-school, primary, secondary, tertiary, vocational)	☑ ²⁰	☑			# people
	4.2	% students attaining standard for education level					# people
	4.3	Education facilities for inclusive and effective learning environments					m2
5 GENDER EQUALITY	5.1	% women in workforce (full-time equivalent), employed at equal pay (OI)	☑				# people
10 REDUCED INEQUALITIES	10.1	Number of rural smallholder and indigenous farmers in supply chain (OI)	☑				# people
	11.1	Number of people with access to safe, affordable and sustainable housing		✓			# people
	11.2	Number of people with access to sustainable transport systems					# people
11 SUSTAINABLE CITIES AND COMMUNITIES	11.3	Floor space of green real estate					m2

Methodologieën, data & voorbeelden (2021)



SDG Impact Measurement Overviews: An Introduction

By the Sustainable Finance Platform



SDG 3 impact measurement overview



Content

1	Introduction	4
2	Methodologies and initiatives	5
3	Data sources	7
4.1	Company examples	9
4.2	Investor examples	10
5	Challenges and future developments	11

Evaluatie en vervolg

- De werkgroep is ingehaald door EU wet- en regelgeving m.n. CSRD en ESRS. Daardoor is het ontwikkelen van een 'eigen' standaard minder relevant geworden.
- De geproduceerde overviews zijn te divers en vluchtig om bruikbaar te zijn in de praktijk.

- In plaats van 'eigen' standaard meer nadruk op regelmatige uitwisseling van ervaring met impactmeting per SDG.
- Calibreren van impactrapportages van specifieke (voorbeeld)bedrijven naar de opkomende standaarden zoals IRIS+ en ESRS.

Initiatieven

- SDI Asset Owner Platform
- Calibratie van top-down impact indicatoren met bottom-up impact rapportages

